

Magellan MK2-1500 Battery



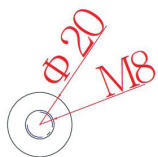
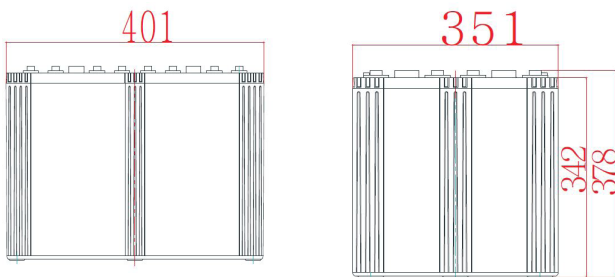
MagellanEnergy

General Features

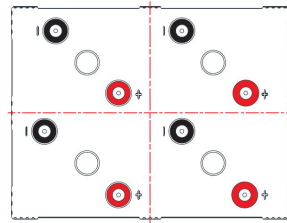
- High corrosion resistant performance: Pb-Ca multi-alloy grid
- Long life
- Excellent charge acceptance ability
- Excellent deep cycle discharge capability
- Strong high and low temperature performance
- Precision sealing technology



Dimensions: 401mm L x 351mm W x 342mm H x 378mm TH



Terminal Dimensions



Specifications

Nominal Voltage	2V		
Nominal Capacity	1500Ah		
Design life	15 years		
Terminal	M8		
Approx. Weight	Approx 96.0kg (212lbs)		
Container Material	ABS		
Rated Capacity	1500Ah	10 Hour Rate	(150A to 1.80V)
	1155Ah	3 Hour Rate	(385A to 1.80V)
	864Ah	1 Hour Rate	(864A to 1.75V)
Internal Resistance	Full charged at 25°C: 0.18mΩ		
Max. Discharge Current	12000A (5S)		
Operating Temperature	Discharge:	-20 ~ 50°C	(-4 ~ 122°F)
	Charge:	-20 ~ 50°C	(-4 ~ 122°F)
	Storage:	-20 ~ 50°C	(-4 ~ 122°F)
Charge Method (25°C)	Charge current: Max. 300A; Recom. 150A		
	Float Charge: 2.23-2.27V, Recom. 2.25V (-3mV/°C)		
	Equalize charge: 2.30-2.35V, recom. 2.35V (-4mV/°C)		
	Cycle Charge: 2.40-2.50V, Recom. 2.40V (-5mV/°C)		
	Self Discharge 3% of capacity declined per month at 25°C		



RoHS



Magellan MK2-1500 Battery



MagellanEnergy

Constant Current Discharge Characteristics Unit A (25°C, 77°F)

FV/ Time	30 min	35 min	40 min	45 min	50 min	55 min	1h	1.5h	2h	2.5h	3h	4h	5h	6h	7h	8h	9h	10h	12h	20h	24h
1.60V	1597	1458	1347	1236	1140	1068	1000	750	589	495	432	348	291	249	219	198	178	162	137	86.9	72.6
1.65V	1499	1374	1287	1188	1098	1017	948	726	576	485	422	343	284	247	217	195	176	161	136	86.1	72.3
1.70V	1407	1302	1224	1131	1047	975	906	708	554	465	409	321	281	244	214	192	174	159	135	84.8	72.0
1.75V	1308	1206	1125	1050	981	930	864	684	535	450	397	312	274	240	212	189	171	156	134	83.6	71.1
1.80V	1224	1134	1038	966	906	858	809	624	506	432	385	309	267	234	208	186	166	150	132	80.3	70.0
1.85V	1091	1014	951	888	834	792	736	576	471	417	365	294	258	228	202	180	164	149	130	79.4	67.6
1.90V	936	874	821	772	731	690	648	521	433	382	342	286	249	215	193	173	155	143	125	76.7	66.2

Constant Power Discharge Characteristics Unit: W/cell (25°C, 77°F)

FV/ Time	30 min	35 min	40 min	45 min	50 min	55 min	1h	1.5h	2h	2.5h	3h	4h	5h	6h	7h	8h	9h	10h	12h	20h	24h
1.60V	2919	2733	2571	2400	2268	2154	2060	1551	1237	1050	908	714	615	525	459	417	376	343	290	184	153
1.65V	2805	2604	2436	2289	2142	2016	1904	1467	1198	1020	875	700	595	514	449	410	368	336	284	180	151
1.70V	2692	2505	2328	2181	2046	1932	1813	1395	1153	957	842	657	561	486	426	401	361	326	277	174	148
1.75V	2600	2424	2265	2100	1950	1824	1742	1353	1111	936	809	665	569	490	428	386	351	321	271	172	146
1.80V	2508	2289	2103	1971	1836	1734	1640	1315	1060	913	782	646	553	476	416	376	341	316	264	169	144
1.85V	2231	2058	1932	1836	1707	1608	1517	1179	969	834	741	600	529	453	401	364	329	304	256	163	138
1.90V	1882	1740	1641	1551	1467	1398	1333	1071	894	768	696	576	502	432	378	353	315	285	241	152	131

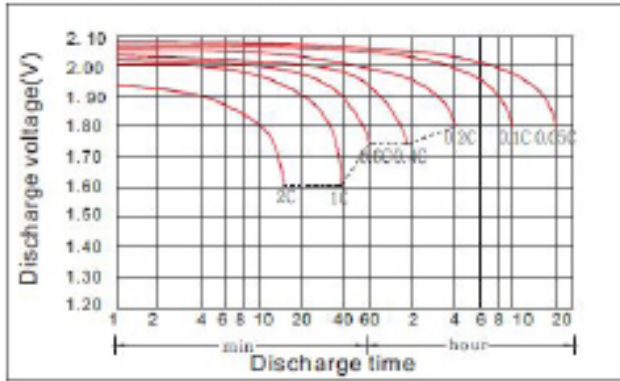
Disclaimer: Manufacturers have the right to self-modify the parameters of the product updates. Please keep in touch with manufacturers to obtain the latest information.

Magellan MK2-1500 Battery

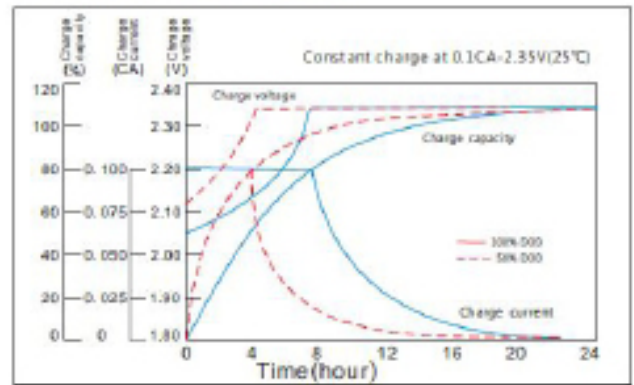


MagellanEnergy

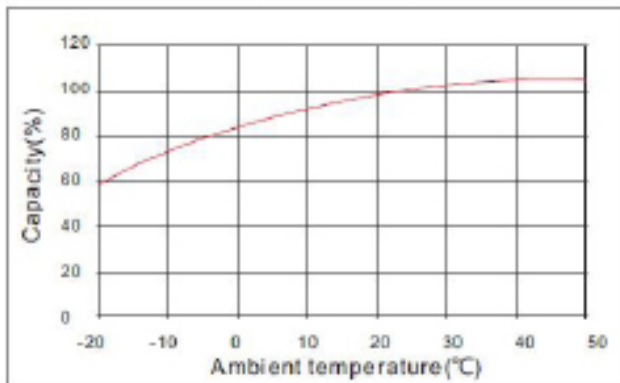
Discharge characteristic



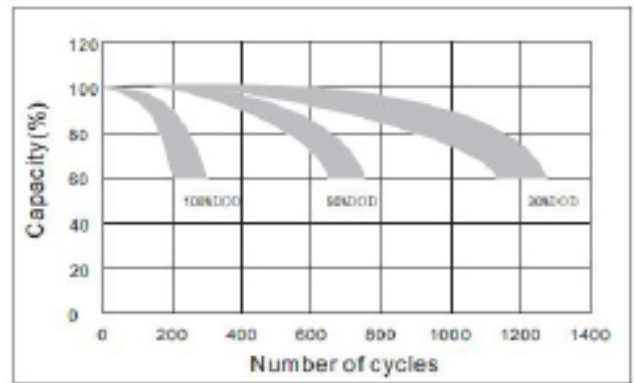
Charging characteristic



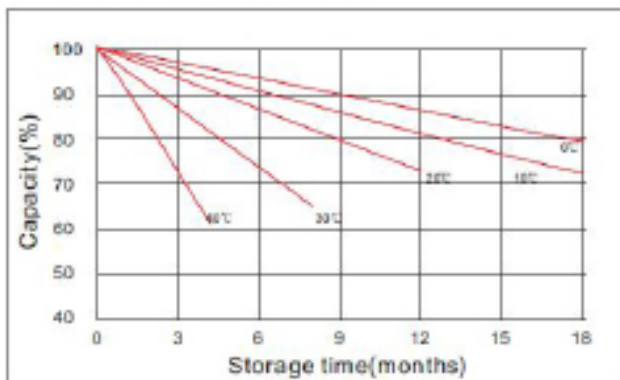
The effect of temperature on capacity



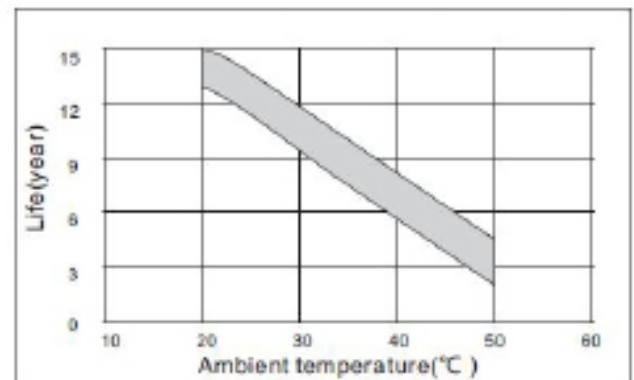
The effect of discharge depth on cycle life



Curves of self-discharge



The effect of temperature on float life



Head Office:
64 Bushland Ridge
Bibra Lake
Perth WA 6163

sales@magellanpower.com.au
www.magellanpower.com.au

Magellan Power reserves the right to change or modify product design, construction, specifications or materials without prior notice.