

Magellan MK2-2000 Battery



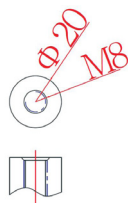
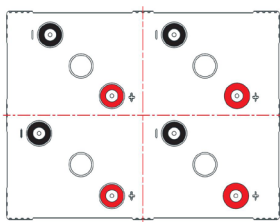
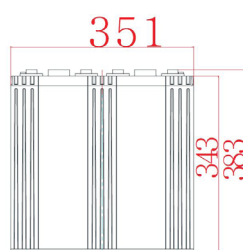
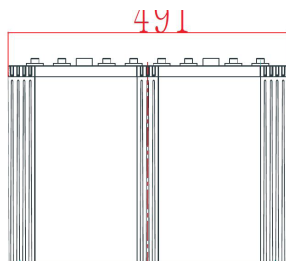
MagellanEnergy

General Features

High corrosion resistant performance: Pb-Ca multi-alloy grid
Long life
Excellent charge acceptance ability
Excellent deep cycle discharge capability
Strong high and low temperature performance
Precision sealing technology



Dimensions: 491mm L x 351mm W x 343mm H x 383mm TH



Terminal Dimensions

Specifications

Nominal Voltage 2V

Nominal Capacity 2000Ah

Design life 15 years

Terminal M8

Approx. Weight Approx 128kg (282bs)

Container Material ABS

Rated Capacity	2000Ah	10 Hour Rate	(200A to 1.80V)
	1539Ah	3 Hour Rate	(513A to 1.80V)
	1151Ah	1 Hour Rate	(1151A to 1.75V)

Internal Resistance Full charged at 25°C: 0.13mΩ

Max. Discharge Current 16000A (5S)

Operating Temperature	Discharge:	-20 ~ 50°C	(-4 ~ 122°F)
	Charge:	-20 ~ 50°C	(-4 ~ 122°F)
	Storage:	-20 ~ 50°C	(-4 ~ 122°F)

Charge Method (25°C) Charge current: Max. 400A; Recom. 200A
Float Charge: 2.23-2.27V, Recom. 2.25V (-3mV/°C)
Equalize charge: 2.30-2.35V, recom. 2.35V (-4mV/°C)
Cycle Charge: 2.40-2.50V, Recom. 2.40V (-5mV/°C)

Self Discharge 3% of capacity declined per month at 25°C



RoHS



Magellan MK2-2000 Battery



Constant Current Discharge Characteristics Unit A (25°C, 77°F)

FV/ Time	15 min	20 min	25 min	30 min	35 min	40 min	45 min	50 min	55 min	1h	1.5h	2h	2.5h	3h	4h	5h	6h	7h	8h	9h	10h	12h	20h	24h
1.60V	2875	2616	2384	2129	1944	1796	1648	1520	1424	1333	1000	786	660	577	464	388	332	292	264	238	217	183	116	96.8
1.65V	2680	2464	2228	1998	1832	1716	1584	1464	1356	1264	968	767	647	562	458	378	329	289	260	235	215	182	115	96.4
1.70V	2513	2306	2098	1876	1736	1632	1508	1396	1300	1208	944	739	620	546	428	375	325	286	256	232	211	180	113	96.0
1.75V	2379	2168	1961	1744	1608	1500	1400	1308	1240	1151	912	713	600	530	416	365	320	282	252	228	208	179	111	94.9
1.80V	2243	2060	1846	1632	1512	1384	1288	1208	1144	1078	832	674	576	513	412	356	313	277	248	221	200	176	107	93.3
1.85V	1989	1820	1638	1455	1352	1268	1184	1112	1056	982	768	628	556	487	392	344	304	270	240	218	198	173	106	90.2
1.90V	1682	1550	1391	1248	1166	1095	1029	975	920	865	695	578	509	457	382	332	287	257	231	207	191	167	102	88.2

Constant Power Discharge Characteristics Unit: W/cell (25°C, 77°F)

FV/ Time	15 min	20 min	25 min	30 min	35 min	40 min	45 min	50 min	55 min	1h	1.5h	2h	2.5h	3h	4h	5h	6h	7h	8h	9h	10h	12h	20h	24h
1.60V	4888	4564	4236	3892	3644	3428	3200	3024	2872	2747	2068	1650	1400	1211	952	820	700	612	556	502	458	386	245	205
1.65V	4691	4412	4072	3741	3472	3248	3052	2856	2688	2538	1956	1597	1360	1167	934	794	686	599	546	491	448	379	240	201
1.70V	4524	4240	3916	3589	3340	3104	2908	2728	2576	2417	1860	1538	1276	1123	876	748	648	568	535	481	434	370	232	197
1.75V	4354	4040	3756	3467	3232	3020	2800	2600	2432	2323	1804	1482	1248	1079	887	759	654	571	515	468	428	361	229	195
1.80V	4150	3800	3540	3345	3042	2804	2628	2448	2312	2187	1753	1413	1218	1043	861	737	634	555	502	454	421	352	225	192
1.85V	3780	3536	3280	2974	2744	2476	2448	2276	2144	2022	1572	1292	1112	988	800	705	604	534	485	439	405	341	217	184
1.90V	3280	3024	2772	2509	2320	2188	2068	1956	1864	1777	1428	1192	1024	929	768	669	576	504	470	420	380	322	203	175

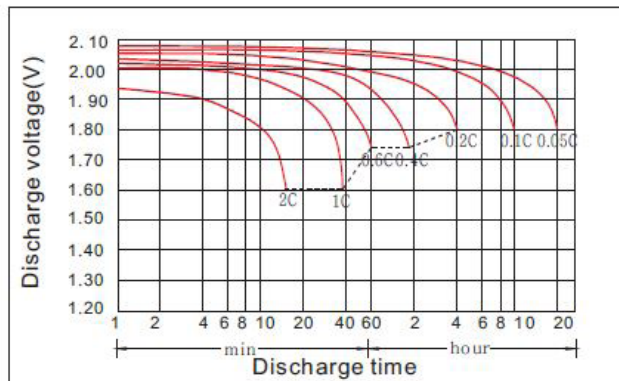
Disclaimer: Manufacturers have the right to self-modify the parameters of the product updates. Please keep in touch with manufacturers to obtain the latest information.

Magellan MK2-2000 Battery

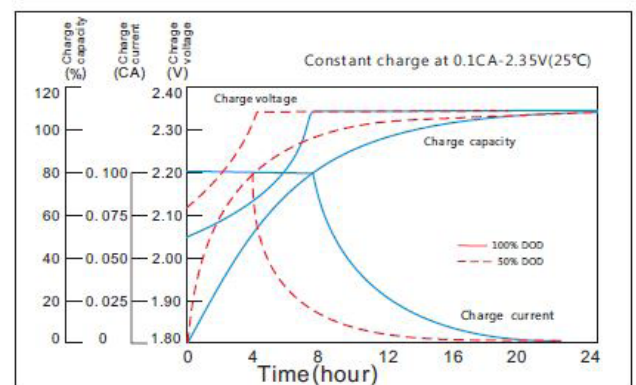


MagellanEnergy

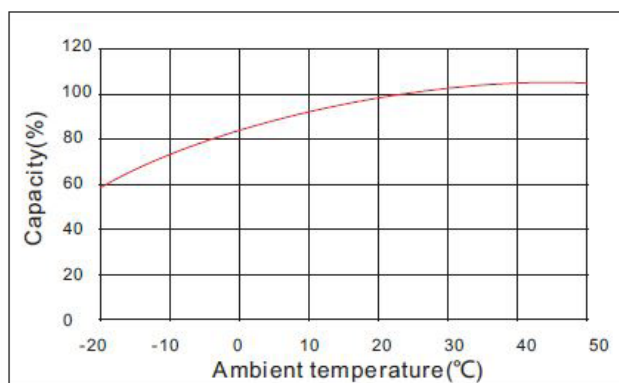
Discharge characteristic



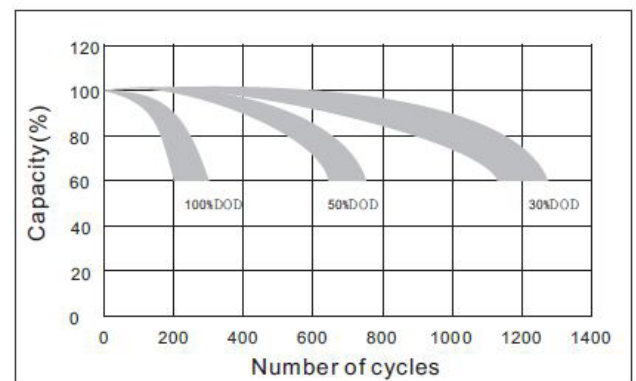
Charging characteristic



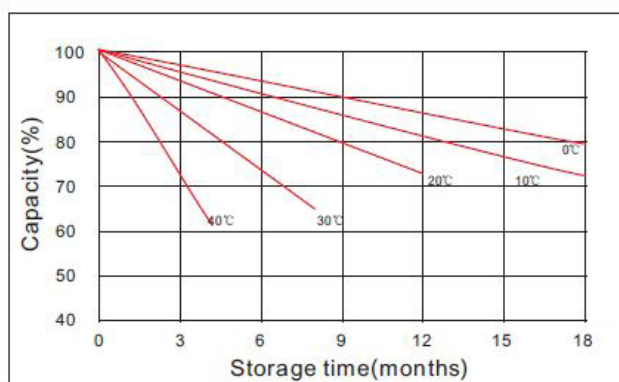
The effect of temperature on capacity



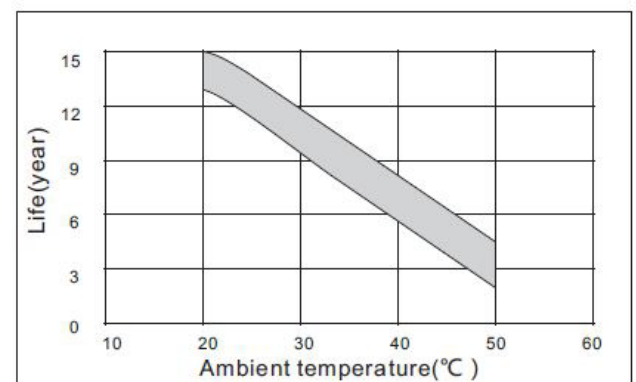
The effect of discharge depth on cycle life



Curves of self-discharge



The effect of temperature on float life



Head Office:
64 Bushland Ridge
Bibra Lake
Perth WA 6163

sales@magellanpower.com.au
www.magellanpower.com.au

Magellan Power reserves the right to change or modify product design, construction, specifications or materials without prior notice.