



DC BATTERY LOAD BANK 3980

Discharge testing is the only accurate method of testing the capacity of batteries. The Magellan Power DC battery load bank delivers a programmable, constant current load for your testing needs. Whether you are load testing for capacity, performance or acceptance, this unit is a complete package solution.

TECHNICAL SPECIFICATION

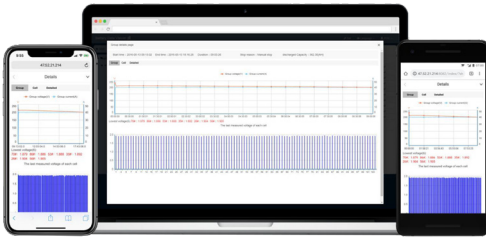
| | |
|---------------------|--|
| Test battery type | 1.2V, 2V, 6V and 12V |
| Discharging Current | Accuracy:1% Resolution: 0.1A or 0. 5% |
| Voltage Accuracy | 0.5% |
| Sampling Interval | 5s ~ 1min |
| Discharge mode | Constant current discharge |
| Display | 128*64 pixel LCD |
| Temperature | 0°C ~ 40°C |
| Humidity | 5% ~ 90% Relative humidity |
| Standard | CE marking, EMC standard |



Features

- Light weight and compact, convenient for onsite testing
- Four auto shut down conditions: Discharge time, discharge capacity, string voltage and cell voltage
- Continued discharge available when previous discharge has been stopped
- Parallel connection of two units for higher discharge current
- Can work with other load banks for assistant discharge
- Can monitor the measurement of other load banks or battery chargers
- Accurate data measurement and clear waveforms
- Auto sorting for lag-out batteries during discharging
- Safe circuits avoid damage to battery during measurement
- Automatic protection upon over-heating and overload
- Thermal cut-off and automatic overload protection
- Smart data viewer, capable of managing large battery data which can be viewed and analysed on PC and mobile phone and can be exported in Excel format





DISCHARGE DATAVIEW SOFTWARE

The included DataView software allows the user to monitor the discharge test in real-time or import and view tested data from the load bank with the provided USB drive. View and print a detailed histogram of each cell's voltage from any point during the discharge test at user defined intervals of 15, 30, or 60 minutes.

Recorded data exports directly to Microsoft Excel. Users can customise the report with company name and location as well as input battery information including battery make, cell type, rated capacity, and more.

The complete test criteria, weakest cells, string information, and individual cell information are included in the report. Graphs for string, and cells are also available to view in the software.

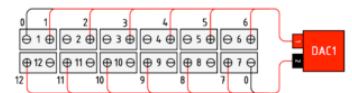
* Custom models available upon request

| PRODUCT MODEL REFERENCE | | 12VDC | 24VDC | 36VDC | 48VDC | 125VDC | 240VDC | 380VDC | 480VDC |
|-------------------------|-------------------|-------|-------|-------|-------|--------|--------|--------|--------|
| 1 | LB24V-300A | | 300 | | | | | | |
| 2 | LB24V-400A | 200 | 400 | | | | | | |
| 3 | LB24V-500A | 250 | 500 | | | | | | |
| 4 | LB24/36V-100A | 50 | 100 | 100 | | | | | |
| 5 | LB24/36V-300A | 150 | 300 | 300 | | | | | |
| 6 | LB24/36/48V-300A | 150 | 300 | 300 | 300 | | | | |
| 7 | LB24/48V-200A | | 200 | | 200 | | | | |
| 8 | LB24/48V-300A | 150 | 300 | 225 | 300 | | | | |
| 9 | LB24/48V-300/600A | 150 | 300 | 450 | 600 | | | | |
| 10 | LB24/48V-600A | 300 | 600 | 450 | 600 | | | | |
| 11 | LB48V-100A | | | | 100 | | | | |
| 12 | LB48V-150A | | | | 150 | | | | |
| 13 | LB48V-300A | | | | 300 | | | | |
| 14 | LB48V-400A | | | | 400 | | | | |
| 15 | LB48V-500A | 125 | 250 | 375 | 500 | | | | |
| 16 | LB48/125V-100A | 25 | 50 | 75 | 100 | 100 | | | |
| 17 | LB48/125V-200A | 50 | 100 | 150 | 200 | 200 | | | |
| 18 | LB48/125V-300A | 75 | 150 | 225 | 300 | 300 | | | |
| 19 | LB48/240V-100A | 25 | 50 | 75 | 100 | 52 | 100 | | |
| 20 | LB125V-100A | | | | | 100 | | | |
| 21 | LB125V-200A | 19 | 38 | 57 | 76 | 200 | | | |
| 22 | LB125V-300A | 29 | 57 | 86 | 115 | 300 | | | |
| 23 | LB125V-400A | 38 | 76 | 115 | 153 | 400 | | | |
| 24 | LB125/240V-100A | 9.6 | 19 | 29 | 38 | 100 | 100 | | |
| 25 | LB125/240V-150A | 14 | 30 | 43 | 60 | 150 | 150 | | |
| 26 | LB240V-150A | 8 | 15 | 23 | 30 | 78 | 150 | | |
| 27 | LB220V-200A | 200 | | | | | 200 | | |
| 28 | LB380V-50A | | | | | | | 50 | |
| 29 | LB380V-100A | | | | | | | 100 | |
| 30 | LB480V-100A | 2.5 | 5 | 7.5 | 10 | 26 | 50 | 79 | 100 |

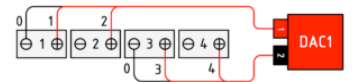


DAC (OPTIONAL ACCESSORIES)

The Magellan DC Load Bank comes with an optional DAC package allowing the voltage of EACH CELL to be wirelessly monitored and recorded during discharge. The DAC package allows the user to evaluate the health of each cell and replace only the cells that require replacement-saving time and money by significantly reducing labor hours and replacement cost. One DAC can monitor either 12 qty of 2V cells or 4 qty of 6/12V cells with the change of wiring.



WIRING OF 4 BATTERIES



WIRING OF 12 BATTERIES



64 Bushland Ridge
Bibra Lake WA 6163
+61 (08) 9434 6621
sales@magellanpower.com.au
magellanpower.com.au